



Department of
Land Use & Transportation





205TH AVENUE

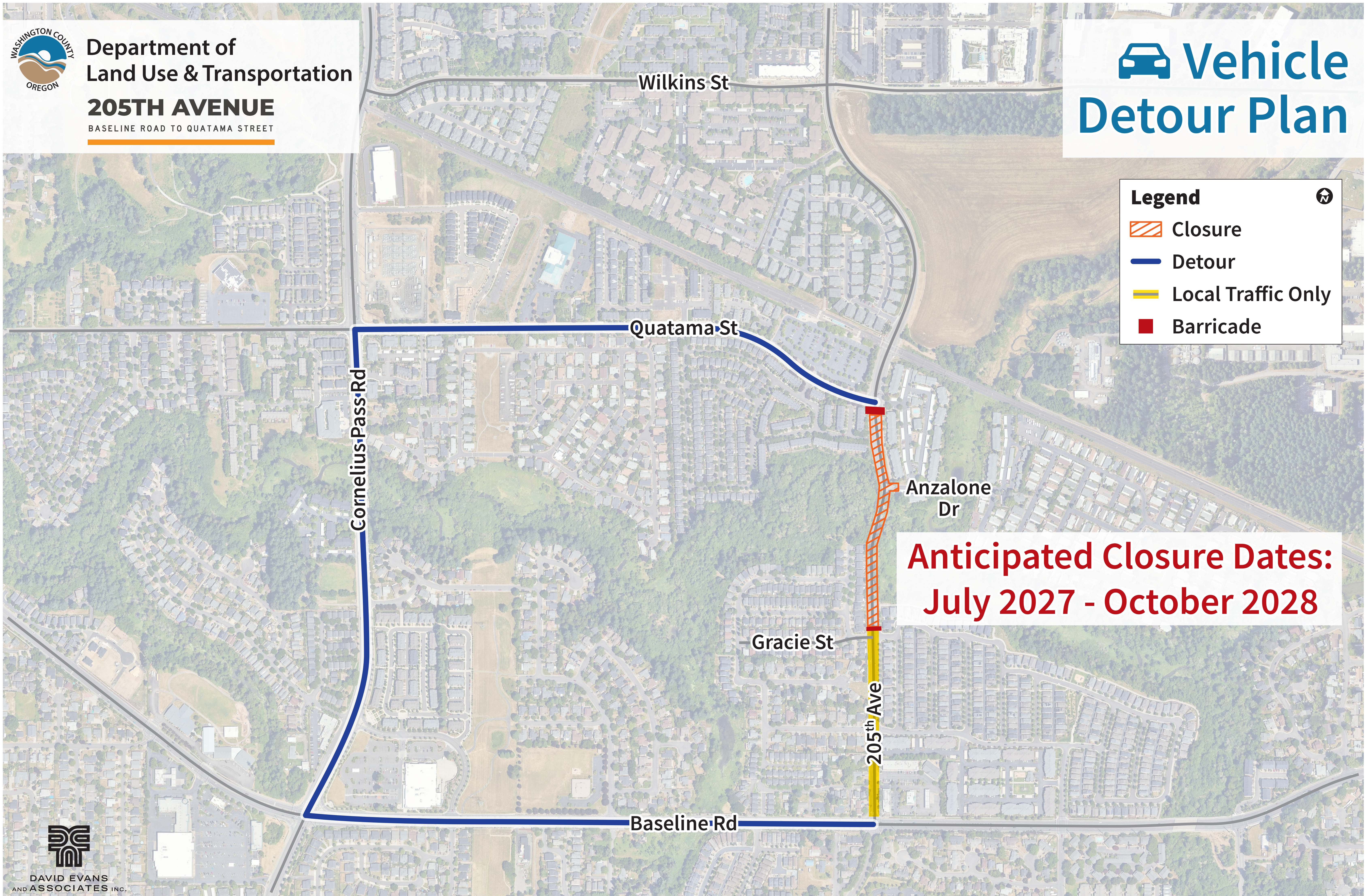
BASELINE ROAD TO QUATAMA STREET

Vehicle Detour Plan

Legend



-  Closure
-  Detour
-  Local Traffic Only
-  Barricade



**Anticipated Closure Dates:
July 2027 - October 2028**



DAVID EVANS
AND ASSOCIATES INC.